

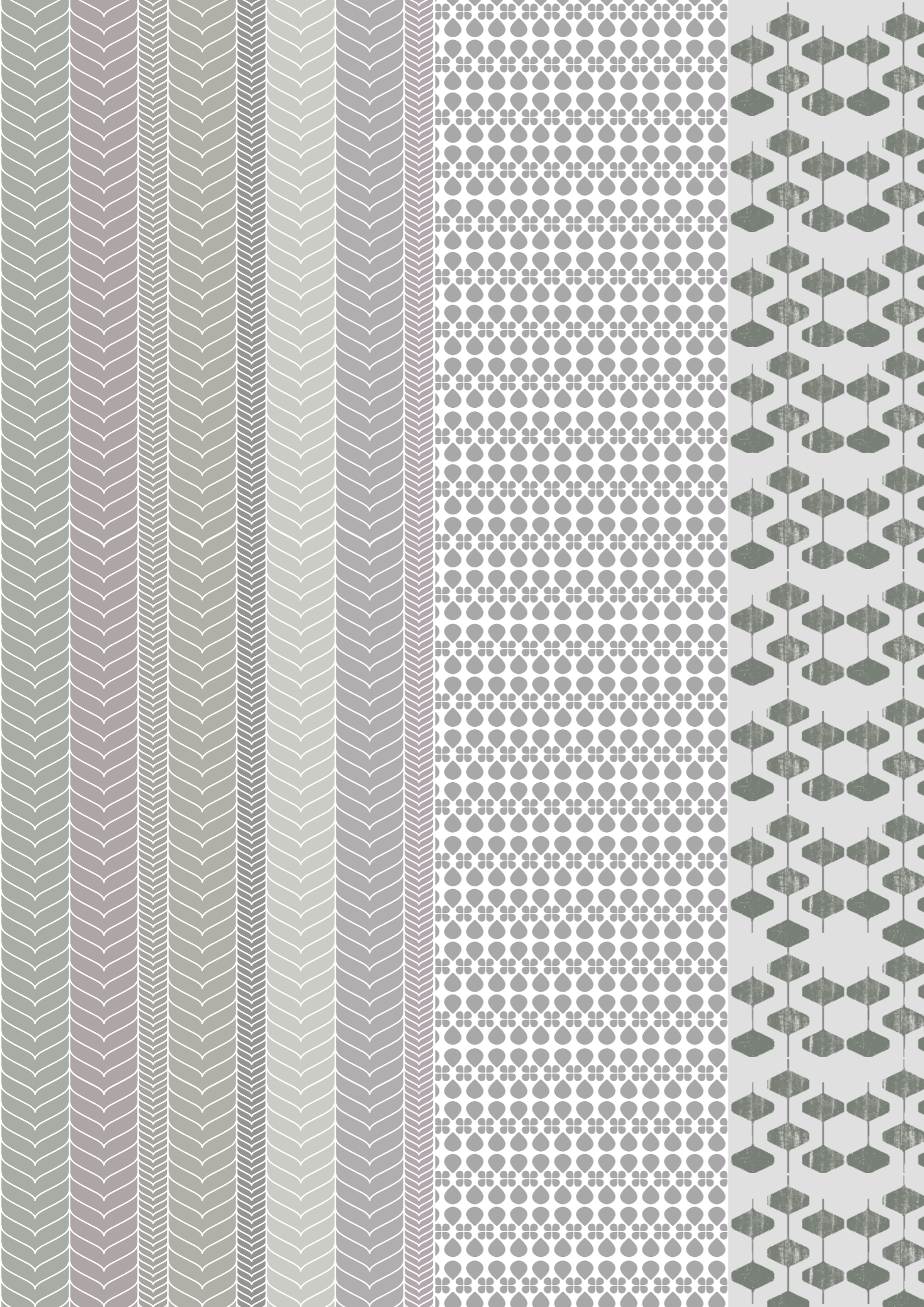
MASH

UF

UN'ARTE
COMBINATA DI
SEGNI E COLORI



AN ARTISTIC
COMBINATION OF
PATTERNS AND
COLOURS



Ma UP SH

02 LINE

06 WAVE

14 JUNGLE

18 CHICK

04 BRICK

08 UD 2

10 UD MIX

16 MURALES

LINEE DAI TONI
CALDI RIVESTONO
LO SPAZIO CON
PERSONALITÀ



LINES WARM TONES PLAY
SPACE WITH PERSONALITY

MASH-UP 36W

MASH-LINE 36W



PERFECT
MIX & MATCH

MASH-BRICK 36W
MASH-BRICK 1 36

UN MIX AND
MATCH
PERFETTO

MASH-UP 36A MASH-WAVE 36A B.MASH-UP

MASH
UP



ELEMENTI VIBRANTI AD EFFETTO ONDA



VIBRANT ELEMENTS WITH
WAVE EFFECTS

MASH
UP

FORME GEOMETRICHE CHE SI RIPETONO RITMICAMENTE SULLA SUPERFICIE



GEOMETRICAL SHAPES THAT
ARE REPEATED RHYTHMICALLY
ON THE SURFACE



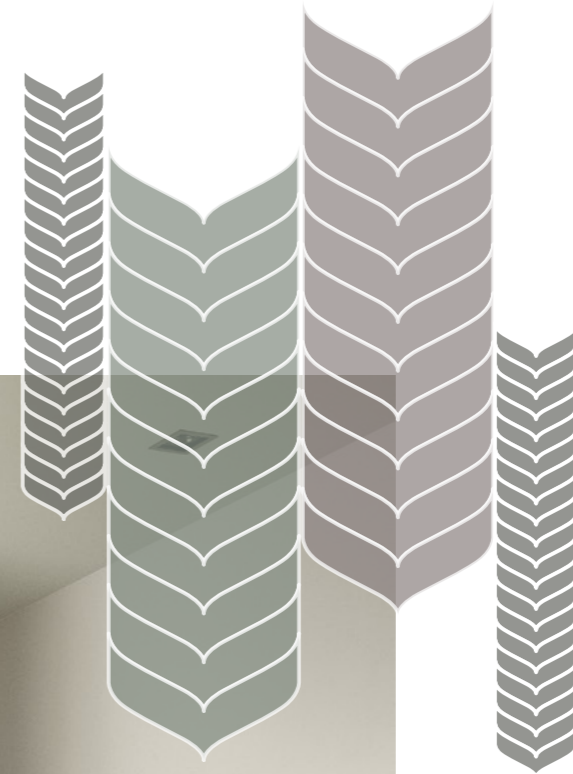
MASH-UP 36W MASH-UP 2 36

MASH-UP

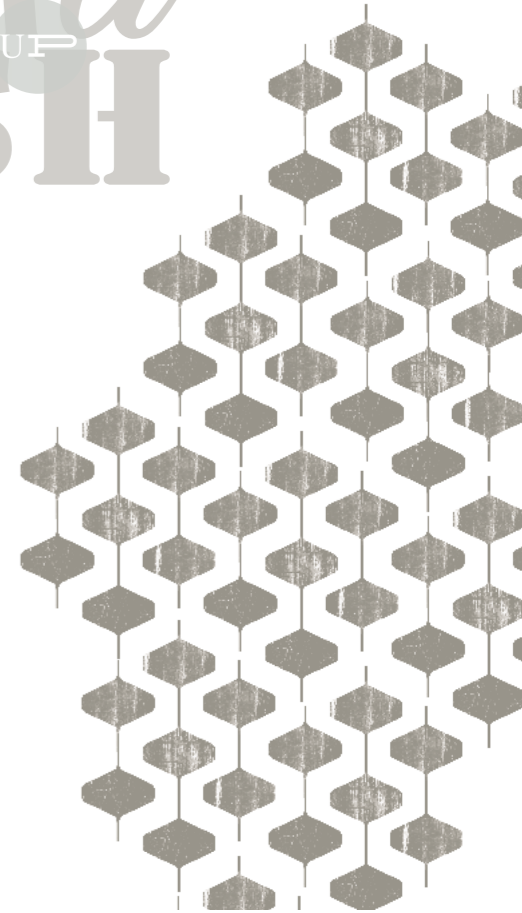
MASH-UP 36A

MASH-UP 4 36

MASH-UP 5 36



MASH



**LA FANTASIA
TROVA IL SUO
GIUSTO CORSO**

SOLUZIONE COMPOSITIVA DI
LIBERA INTERPRETAZIONE

MASH-UP 36A MASH-UP 4 36 MASH-UP 5 36 MASH-UP 2 36 MASH-UP 1 36 MASH-UP 3 36



AN ORIGINAL COMPOSITION
THAT CAN BE FREELY
INTERPRETED

JUNGLE 2

MASH-UP 36W



UN CRESCENDO DI EMOZIONI E DI ORIGINALITÀ

LAYOUTS AND ACHIEVE
EXCITING AND ORIGINAL
FINISHES



MASH-UP

**MURALES
E GRAFFITI
LA STREET
ART DIVENTA
ARREDO
DOMESTICO**

MURALS AND GRAFFITI:
STREET ART BECOME
HOME DECOR



COME UN
FOGLIO BIANCO CHE
CON ESTRO E
FANTASIA SI RIEMPIE
DI FORME E COLORI

LIKE A WHITE SHEET OF PAPER
THAT, WITH CREATIVITY AND
IMAGINATION, IS FILLED WITH
SHAPES AND COLOURS

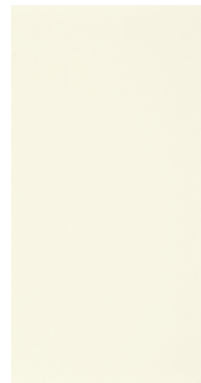
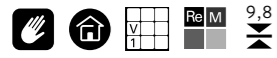
MASH
UP
SH

MASH-BRICK 36W
CHICK RED 2
CHICK YELLOW 2



MASH-UP

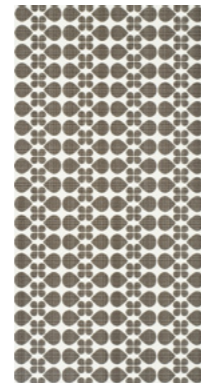
BICOTTURA DA RIVESTIMENTO / DOUBLE-FIRED WALL TILE



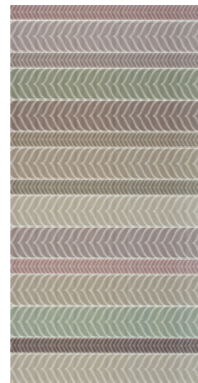
MASH-UP 36A
30X60-12"X24"



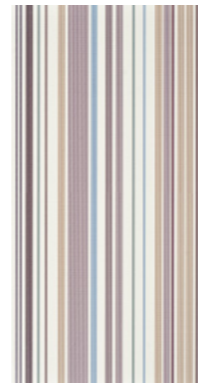
MASH-LINE 36A
30X60-12"X24"



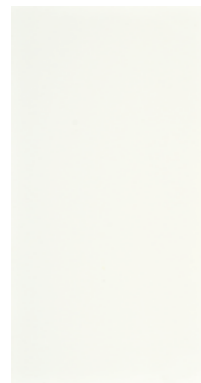
MASH-UP 2 36
30X60-12"X24"



MASH-UP 5 36
30X60-12"X24"



MASH-UP 3 36
30X60-12"X24"



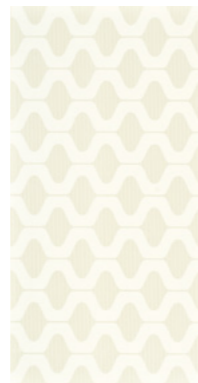
MASH-UP 36W
30X60-12"X24"



MASH-LINE 36W
30X60-12"X24"



MASH-UP 1 36
30X60-12"X24"



MASH-UP 4 36
30X60-12"X24"

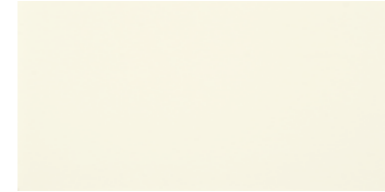
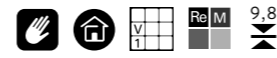


B.MASH-UP
0,5X60-2.2"X24"



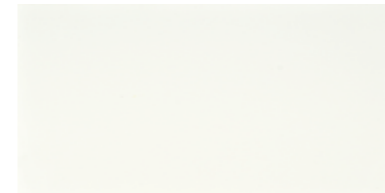
JUNGLE 2
30X60-12"X24"

BICOTTURA DA RIVESTIMENTO / DOUBLE-FIRED WALL TILE



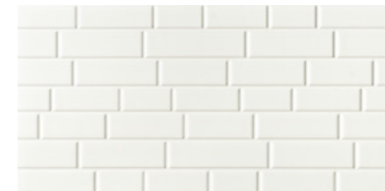
MASH-UP 36A
30X60-12"X24"

B.MASH-UP 60A
2X60-0.8"X24"



MASH-UP 36W
30X60-12"X24"

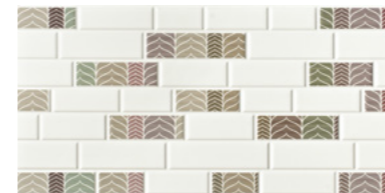
B.MASH-UP 60W
2X60-0.8"X24"



MASH-BRICK 36W
30X60-12"X24"



MASH-BRICK 1 36
30X60-12"X24"



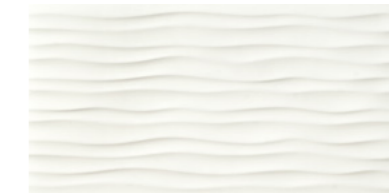
MASH-BRICK 5 36
30X60-12"X24"



MASH-BRICKMIX 36
30X60-12"X24"



MASH-WAVE 36A
30X60-12"X24"



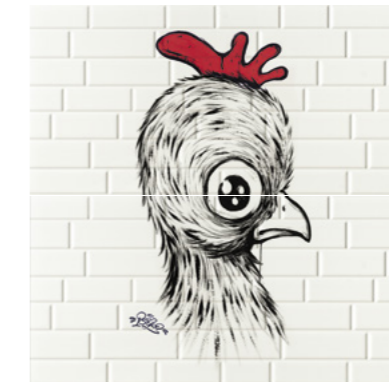
MASH-WAVE 36W
30X60-12"X24"



MASH-WAVE 1 36A
30X60-12"X24"



MASH-WAVE 1 36W
30X60-12"X24"



CHICK RED 2
30X60-12"X24"



CHICK YELLOW 2
30X60-12"X24"



MURALES MIX
30X60-12"X24"



SimBø LOGIA

SYMBOLS

INDICAZIONI D'USO
INDICATIONS FOR USE

 **RIVESTIMENTO**
WALL TILES

STRUTTURA
STRUCTURE

 **LISCIO**
SMOOTH

DESTINAZIONI D'USO
SUGGESTED APPLICATIONS

 **ABITAZIONI**
DOMESTIC PURPOSE


STONALIZZAZIONE
SHADE VARIATION

 V1

FINITURA
FINISH

 **NATURALE**
NATURAL

ASPETTO SUPERFICIALE
SURFACE LOOK

 **OPACO**
MATT

BORDO
EDGE

 **RETIFICATO MONOCALIBRO**
MONOCALIBER, RECTIFIED

CERTIFICAZIONI

CERTIFICATIONS

LA NATURA E LA TECNOLOGIA SI FONDONO PER DAR VITA A UN NUOVO CONCETTO DI CERAMICA CHE METTE AL CENTRO IL RAPPORTO TRA L'UOMO E L'AMBIENTE; UN BINOMIO INSCINDIBILE PER IL CONSEGUIMENTO CONSAPEVOLE DEI PRINCIPI DI ECO-EFFICIENZA AZIENDALE ED ECO-COMPATIBILITÀ AMBIENTALE SIGILLATO DA IMPORTANTI RICONOSCIMENTI.

NATURE AND TECHNOLOGY COMBINE TO GIVE BIRTH TO A NEW CONCEPT IN CERAMIC TILES WHICH PLACES THE RELATIONSHIP BETWEEN MAN AND THE ENVIRONMENT AT THE CENTRE; AN INSEPARABLE COMBINATION FOR THE CONSCIOUS ACHIEVEMENT OF ECO-EFFICIENT CORPORATE PRINCIPLES AS WELL AS THOSE OF ENVIRONMENTAL ECO-COMPATIBILITY, SEALED WITH IMPORTANT RECOGNITIONS.

ISO 14001

IL SISTEMA DI GESTIONE AMBIENTALE DI COOPERATIVA CERAMICA D'IMOLA - IN RIFERIMENTO ALLA NORMA UNI EN ISO 14001 - È STATO IMPOSTATO PERSEGUENDO I SEGUENTI PRINCIPI:

- SALVAGUARDIA DELL'AMBIENTE E DELLE RISORSE NATURALI.
- POLITICA ENERGETICA EFFICACE ED EFFICIENTE.
- RISPETTO PER L'ECOSISTEMA.

THE ENVIRONMENTAL MANAGEMENT SYSTEM OF COOPERATIVA CERAMICA D'IMOLA - IN REFERENCE TO THE UNI EN ISO 14001 NORMATIVE - WAS IMPOSED ON THE BASIS OF THE FOLLOWING PRINCIPLES:

- PROTECTION OF THE ENVIRONMENT AND OF NATURAL RESOURCES.
- EFFICIENT AND EFFECTIVE ENERGY POLICY.
- RESPECT FOR THE ECOSYSTEM.



ISO 9001

COOPERATIVA CERAMICA D'IMOLA HA OTTENUTO LA CERTIFICAZIONE DEL SISTEMA DI QUALITÀ IN RIFERIMENTO ALLA NORMA UNI EN ISO 9001, PER LA PROGETTAZIONE, PRODUZIONE E VENDITA DI PIASTRELLE CERAMICHE IN TUTTE LE TIPOLOGIE PRODUTTIVE.

L'IMPLEMENTAZIONE DI TALE SISTEMA HA I SEGUENTI OBIETTIVI:

- PERSEGUIRE, ATTRAVERSO UN'ADEGUATA GESTIONE DELLE RISORSE TECNICHE E IMPIANTISTICHE, IL CONTINUO MIGLIORAMENTO DEI PROCESSI PRODUTTIVI;
- GARANTIRE IL CORRETTO IMPIEGO, L'EFFICIENZA, L'ATTENDIBILITÀ ED AFFIDABILITÀ DEI RISULTATI DI MISURE E PROVE, ATTRAVERSO LA PIANIFICAZIONE DELLA MANUTENZIONE ED IL CONTROLLO DI IMPIANTI, APPARECCHIATURE E STRUMENTAZIONI;
- CONTRIBUIRE AL MIGLIORAMENTO DEL CONTESTO SOCIALE DI CUI È PARTE, NEL RISPETTO DELLE PERSONE E DELL'AMBIENTE IN CUI È INTEGRATA.

COOPERATIVA CERAMICA D'IMOLA HAS OBTAINED THE QUALITY SYSTEM CERTIFICATION, IN RELATION TO THE UNI EN ISO 9001 NORMATIVE, FOR THE DESIGN, PRODUCTION AND MARKETING OF CERAMIC TILES FOR ALL OF THE PRODUCTION TYPES.

IMPLEMENTATION OF THIS SYSTEM - IN RELATION TO THE UNI EN ISO 9001 NORMATIVE - HAS THE FOLLOWING OBJECTIVES:

- ACHIEVEMENT, THROUGH ADEQUATE MANAGEMENT OF THE TECHNICAL AND SYSTEM RESOURCES, OF THE ONGOING IMPROVEMENT OF THE PRODUCTION PROCESSES.
- GUARANTEE THE CORRECT USE, EFFICIENCY, RELIABILITY AND DEPENDABILITY OF THE RESULTS OF THE MEASUREMENTS AND TESTS THROUGH THE PLANNING OF THE MAINTENANCE AND THE CONTROL OF THE SYSTEMS, EQUIPMENT AND INSTRUMENTATION.
- CONTRIBUTE TO THE IMPROVEMENT OF THE SOCIAL CONTEXT OF WHICH IT IS PART AND IN TERMS OF THE PEOPLE AND THE ENVIRONMENT INTO WHICH IT IS INTEGRATED.



EMAS

COOPERATIVA CERAMICA D'IMOLA, ATTUANDO UNA PRECISA POLITICA AZIENDALE DI SVILUPPO SOSTENIBILE, HA OTTENUTO LA REGISTRAZIONE ECO-MANAGEMENT AND AUDIT SCHEME (EMAS), UN IMPORTANTE RICONOSCIMENTO A LIVELLO EUROPEO, RELATIVO AI SITI PRODUTTIVI, VOLTO AL CONTINUO MIGLIORAMENTO DEGLI STANDARD PRODUTTIVI E ALLA SENSIBILIZZAZIONE DI TUTTO IL PERSONALE SOTTO IL PROFILO DELLA SALVAGUARDIA AMBIENTALE.

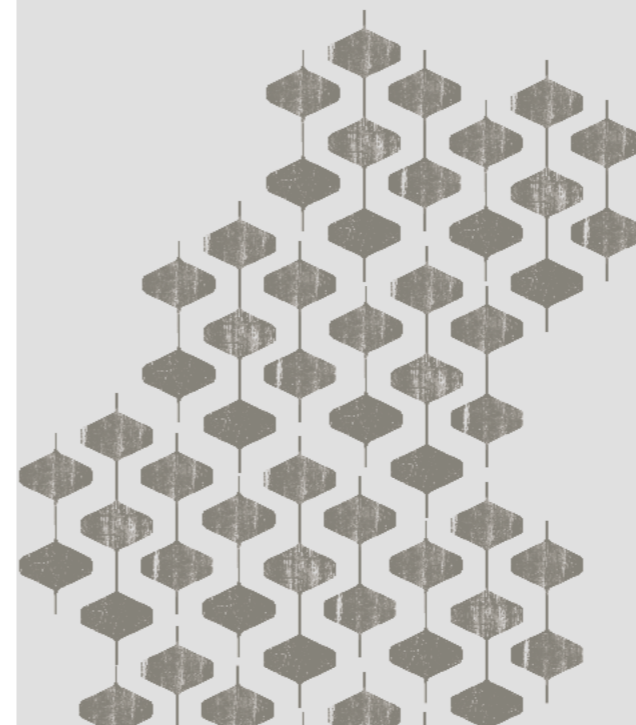
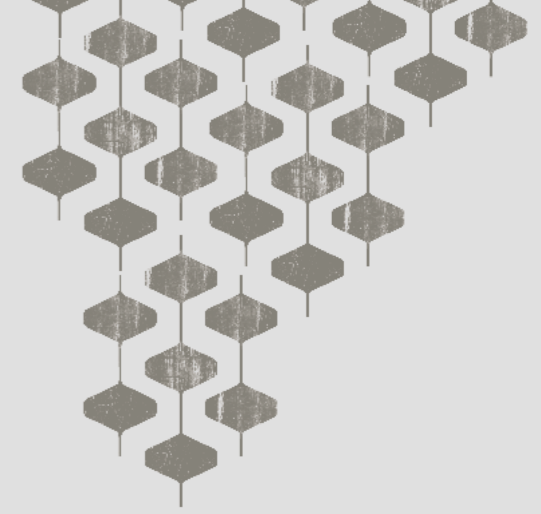
THROUGH THE IMPLEMENTATION OF A PRECISE COMPANY POLICY ON SUSTAINABLE DEVELOPMENT, COOPERATIVA CERAMICA D'IMOLA HAS OBTAINED ECO-MANAGEMENT AND AUDIT SCHEME (EMAS) REGISTRATION. THIS IS AN IMPORTANT RECOGNITION ON A EUROPEAN LEVEL THAT AIM AT THE CONTINUOUS IMPROVEMENT OF PRODUCTION STANDARDS AND AWARENESS OF ALL OF ITS EMPLOYEES IN TERMS OF PROTECTING THE ENVIRONMENT. THE EMAS SYSTEM IS A VOLUNTARY AWARENESS FOR THOSE COMPANIES COMMITTED TO EVALUATING AND IMPROVING THEIR ENVIRONMENTAL EFFICIENCY THROUGH A MORE RESPONSIBLE CHOICE OF BUYING AND MANAGEMENT, A MORE CAREFUL USE OF AIR, WATER, TERRITORY, RAW MATERIALS AND ENERGY.



LEED

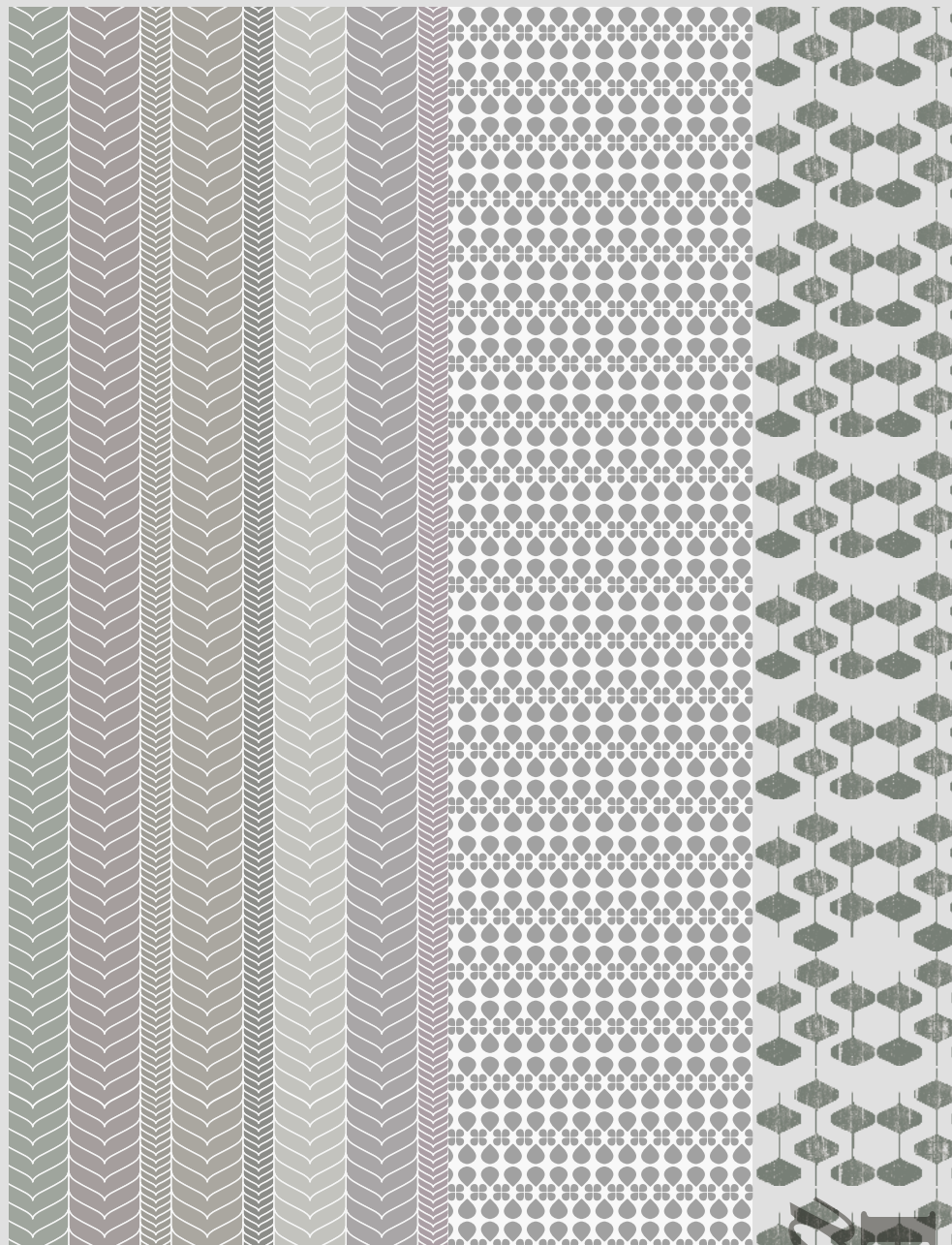
COOPERATIVA CERAMICA D'IMOLA È MEMBRO DEL GREEN BUILDING COUNCIL ITALIA, CHE OPERA PER LA DIFFUSIONE DEI CRITERI DEL MARCHIO LEED. LE PIASTRELLE, IN RELAZIONE ALLE CARATTERISTICHE E AL PROCESSO PRODUTTIVO CON CUI SONO REALIZZATE, POSSONO CONTRIBUIRE AD OTTENERE CREDITI L.E.E.D (LEADERSHIP IN ENERGY AND ENVIRONMENTAL DESIGN). IL LEED È UN SISTEMA DI CERTIFICAZIONE ENERGETICO - AMBIENTALE DEGLI EDIFICI CHE PREVEDE L'ATTRIBUZIONE DI UN PUNTEGGIO, ASSEGNATO IN FUNZIONE DELLA COMPROVATA CONFORMITÀ RISPETTO AD ALCUNI "CREDITI" PRESTABILITI. TALE CONTRIBUTO VA VALUTATO NEL TOTALE DEI MATERIALI UTILIZZATI NELL'EDIFICIO.

COOPERATIVA CERAMICA D'IMOLA IS A MEMBER OF THE GREEN BUILDING COUNCIL ITALIA, WHICH OPERATES FOR THE DIFFUSION OF THE LEED ACCREDITATION SYSTEM. IN RELATION TO THE CHARACTERISTICS AND PRODUCTION PROCESS IN WHICH THEY ARE MANUFACTURED, TILES CAN CONTRIBUTE TO OBTAINING L.E.E.D (LEADERSHIP IN ENERGY AND ENVIRONMENTAL DESIGN) CREDITS. LEED IS AN ENERGY-ENVIRONMENTAL ACCREDITATION SYSTEM FOR BUILDINGS AND IS CHARACTERISED BY A POINTS SYSTEM ATTRIBUTED ACCORDING TO THE VERIFIED CONFORMITY OF SEVERAL PRE-ESTABLISHED "CREDITS". THIS CONTRIBUTION IS EVALUATED OVER THE TOTAL OF MATERIALS USED IN THE BUILDING.





IMOLACERAMICA.IT



MSI
UP

A brand of
Cooperativa Ceramica d'Imola S.c.

Via V. Veneto, 13
40026 Imola (BO) Italia
Tel. +39 0542 601601
Fax +39 0542 31749
